



Accent 1400 Quick Reference

Applies to Software Version 2.02

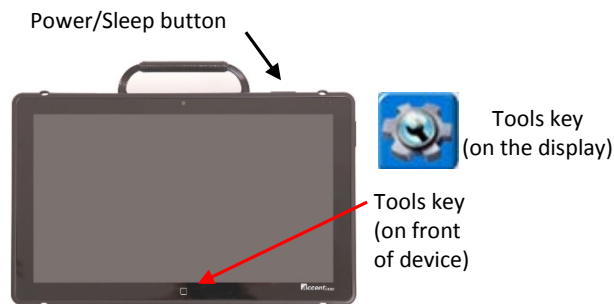
PRC Tech Support: (800) 262-1990

service@prentrom.com

www.prentrom.com/support

YouTube video tutorial playlists

www.youtube.com/user/PRCaccess/playlists



Terms you need to know:

Activity Row

A set of buttons located at the top of the screen. This row offers most of the device user's frequently used noun items (fringe vocabulary items).

Core Vocabulary

The bottom remaining rows offer words frequently used to communicate in our language: verbs, pronouns, adjectives, negatives, question words, etc. These keys may also act as category keys that will link to the nouns in the activity row.

Pages

Pages serve as a warehouse of additional vocabulary items that are less frequently used. You will find the **Pages** link at the top right corner of the activity row.

Tools (to modify device)

These keys provide access to the user keys, such as the Toolbox and Setup key.

POWER/SLEEP BUTTONS

The power/sleep button is on the top of the device.

1. To power on the device, press and hold the power/sleep button.
2. To wake the device from sleep mode, press the power/sleep button.
3. The device should be restarted weekly.* To restart, select **Tools, Toolbox, Maintenance Menu, Power Management, Restart**, and then **Yes**.

* Recommended: Restart once per week; put to sleep daily.

4. If you don't plan to use the device or want to store it for more than a couple of days, it is recommended to power off the device completely. To do this, select **Tools, Shutdown**, and then **Yes**.

CHANGING USER AREAS

1. Select **Tools**, and then **Toolbox**.
2. Select **User Area Menu**. Select **Switch User Area**.
3. Select the User Area (1-6) to switch to and wait until the device returns you to the User Area Menu screen. Select **OK**.
4. From the toolbox, press **Go to Home** (blue key).
5. Please note that **Replace User Area** provides more user area choices and will *overwrite* an existing user area.

CHANGING THE VOICE

1. Select **Tools**, and then **Toolbox**.
2. Select **Speech Menu**.
3. Select **Change Voice**.
4. Select the desired voice. Wait for it to load. To listen to the voice, select **Test Speech**.
5. Use the additional keys to adjust the pitch, rate, etc. of the voice. Select **OK** and **Go to Home**.

PRONUNCIATION DICTIONARY

"Teach" the device to pronounce a word correctly.

1. Select **Tools**, and then **Toolbox**.
2. Select **Pronunciation Dictionary**.
3. Choose either **Main Voice** or **Prompt Voice**.
4. Select **Add Pronunciation**.
5. Enter the correct spelling of the word. Select **OK**.
6. Enter the "phonetic spelling" of the word. To test the pronunciation, select the message window.
7. Select **OK**, and then **OK**.
8. From the toolbox, press **Go to Home** (blue key).

DISABLING THE TOOLBOX

To *disable* the toolbox:

1. Select **Tools**, and then **Toolbox**.
2. Select **Maintenance Menu**.
3. Select **Disable Toolbox** and select **Disable** under **Toolbox**. You must enter a password and select **OK** to disable the toolbox.
4. Remember your password. (see "Create Toolbox Disable Override" below)
5. Select **OK, OK**, and then **Go to Home** (blue key).

To *enable* the toolbox:

1. Select **Tools**.
2. Enter your password and select **OK**.
3. Select **Toolbox**.
4. Select **Maintenance Menu**.
5. Select **Disable Toolbox** and select **Enable** under **Toolbox**.
6. Select **OK, OK**, and then **Go to Home** (blue key).

Additional options

1. Select **Tools, Toolbox, Maintenance Menu**, and **Disable Toolbox**.
2. **Create Toolbox Disable Override**: Select this option and then insert a USB flash drive. Override will be placed on the flash drive. Select **OK**. The device will "unlock" anytime this USB stick is inserted into the device, without the need to enter a password.
3. Enable or Disable **On-Screen Tools Key, Help Button**, and/or **Pulldown Menu Button**.

MODIFY USER KEYS

The user keys appear after you select **Tools**.

1. Select **Tools**, and then **Toolbox**.
2. Select **User Area Menu**.
3. Select **Modify User Keys**.
4. Select the key you want to modify.
5. Select **Enter Assignment, Clear Display**, and then **Insert Tool**.
6. Select the tool you want to insert. Select **OK**.
7. To change the icon and label, select **Change Icon** and **Change Label**.
8. Select **OK** and then **OK**.
9. From the toolbox, press **Go to Home** (blue key).

Note: Select **Clear Key Contents** if you want no tool assigned to the User Key.

HIDING/SHOWING KEYS

Please note: Use hide/show to limit vocabulary in Unity 1-hit or pages and use Vocabulary Builder to limit vocabulary in Unity sequenced.

1. Select **Tools**, and then select **Setup Key**.
2. Select **Hide/Show Keys** at the top right corner of the screen.
3. Select the keys to hide or select **Hide All**.
4. If you selected **Hide All**, select individual keys to “show” by touching them. They brighten.
5. Select the text display area to exit.
6. To show all keys, select **Show All** after step 2.

EDITING CORE KEYS

1. Be sure you are looking at the key you want to edit. Select **Tools**, and then select **Setup Key**.
2. Touch the core key you want to edit.
3. If you are modifying a speaking key, touch **Spell Message or Define Key Function** to type text that will appear and be spoken in the display. Be sure to put a *space* after the last character. Select **OK**.
4. Select **Change Icon (Modify Last Picture)** and **Change Label**.
5. When you are finished, select **OK**.

SETTING UP A KEY

1. Be sure you are looking at the key you want to edit. Select **Tools**, and then **Setup Key**.
2. Touch the key you want to edit.
3. Select **Change Icon**. Then do one of the following:
A. Spell Icon to Find. Spell what you are looking for. Select **OK**. Touch the icon you want.
B. Plug a USB flash drive with a photo into the device. Select **Import Icon**. If the content of the flash drive is showing, touch the photo you want to import. If not, select **Up Folder** to navigate to the flash drive, and then touch the photo you want. Select **OK** and **OK**. Select **Cancel**. The photo will be placed on the key and in the imports folder of the icon dictionary.
C. Search for an icon by category.
4. Look to see if the “text to speak” is correct. If not, select **Spell Message or Define Key Function** to type text that will appear in the display and be spoken. Be sure to put a *space* after the last character. Select **OK**.

5. Check to see if the label is correct. If it isn’t, select **Change Label**, type new label and **OK**.
6. Select **OK** or **Choose Next Key to Define**.

CREATING A NEW ACTIVITY

1. Select **Tools**, and then **Toolbox**.
2. Select **Create Activity**.
3. Spell the name of the new activity. Select **OK**.
4. Select an icon for the activity.
5. Touch a blank key in the activity. A red box will appear around the key.
6. Select **Change Icon** to search for an icon.
7. Select **Spell Message or Define Key Function** to type text that will appear and be spoken in the display, be sure to put a *space* after the last character. Select **OK**.
8. **Change Label** if needed. Select **OK**.
9. When finished, select **OK** (or touch the next key to be set up). **Go to Home** (blue key).

HIDING ACTIVITIES

1. Select **Tools**, then **Setup Key**.
2. Select the activity you wish to “hide”.
3. Choose **Hide** on the right side of this screen.
4. If you don’t see the activity you need, scroll through by selecting **More Items**.
5. When you are finished, select **OK**.

CREATING and LINKING PAGES

1. Be looking at the key that will link to the new page. Select **Tools**, then **Setup Key**.
2. Select the key that will link to the new page.
3. Select **Change Icon** to search for an icon.
4. Select **Spell Message or Define Key Function**.
5. Select **Clear Display**.
6. Select **Page Link**.
7. Decide if you want your page to automatically close after a button is pushed (“close”) or remain open (“open”).
8. **A.** Find and select the page you want to link if it is already created.
9. **B.** If the page is not already created, select **Create New Page**, type the name of the page, and select **OK**. Choose a keyboard size (to format a new page like an already existing page, select **Create Page from Template**). Select **OK**.
10. Select **Change Label** to change the label. Labels for page links are typically in all CAPS in Unity.
11. Select **OK**.

VOCABULARY BACK UP

1. Insert your flash drive into a USB port.
2. Select **Tools**, and then **Toolbox**.
3. Select **Transfer Memory Menu**.
4. Select **Save One User Area** and then the user area you want to back up or **Save Entire Device Contents**.
5. Make sure the pre-set folder is a USB drive. If so, select **OK**. If not, select **Choose different folder** and navigate to the USB drive. Then select **OK**. Type the file name and date (xx-xx-xx).
6. Select **OK** and wait for the memory transfer to complete. Select **OK**, **OK**, and then **Go to Home**.
7. To load in a backup file:
 - a. Follow steps 1-3 and then choose **Load One User Area** or **Load Entire Device Contents**. This process will replace what currently exists in the user area or entire device.
 - b. If loading one user area, choose a user area to load into.
 - c. Select the backup file on the USB drive.
 - d. Wait for the memory transfer to complete. Select **OK**.
 - e. If asked “Switch to this User Area now?” answer yes or no. Then **OK** and **OK**.

TAKING A PHOTO

1. Select **Tools**, and then **Toolbox**.
2. Select **Camera Menu**.
3. Frame the picture. Select **Take Picture**.
4. Do either of the following:
A. Select **Save as Scene** to use this photo for a visual scene. Select **Rename Scene**, and then select **Clear Display**. Type a name, select **OK**, **OK**.
B. Select **Save as Icon** to use the photo for an icon on a single key. Select **Rename Icon** and then select **Clear Display**. Type a name, select **OK**, and select **OK**. Put the picture in a category or **Cancel** to have it go to the imports folder.
5. Select **OK** and then select **Go to Home**.

INTERNET SOFTWARE UPDATES *

1. The device must be connected to a Wi-Fi network.
2. Select **Tools**, and then **Toolbox**.
3. Select **Maintenance Menu**, and then **Software Update Menu**.
4. Select **Internet Update** and follow the prompts.

* Internet updates only apply to versions 1.08 and higher.